

The Yagi-Directional, GPRS remote antenna is shown right. This is used to gain signal strength in areas where there is little to no cellular coverage.

The RSI- XT Series control panels (XT600, XTX600) can have its' GPRS Modem Antenna externally connected to a high gain 30 degree focused directional antenna. Any additional range seen is dependent on the local noise floor, distance to the cellular tower, obstructions (metal, earth, concrete, etc.) The XTO600 already has a High Gain GPRS antenna hooked up but does have the capability of adding the Yagi GPRS antenna.

Note: This modification will not cure all cellular range problems.

To do this, some fabrication must be done to the RSI control panel to connect a 19" pig-tail coax with MMCX connector to the Cellular Modem in the control panel. *Note: This task requires a good level of electronic / mechanical skill.*

Before you begin be aware of static discharge, this will damage circuit board parts. Wear an anti-static wrist guard that is properly grounded.

There is a bulkhead female "N" connector that has a 19" pig-tail and small - Diameter coax with a right - angle MMCX make jack that needs to be plugged into the mmcex receiver jack on the control panel labeled 'GPRS'.

You must first remove the old cell modem antenna. It unplugs from the Control Panel marked GPRS, pull it straight up using a needle nose pliers, **FIG-A**.

Carefully plug the new 9" pig-tail coax MMCX male connector into the GPRS MMCX female on the Control Panel, **FIG-B**. Run the coax back around and through the cable management and out the back of the panel.

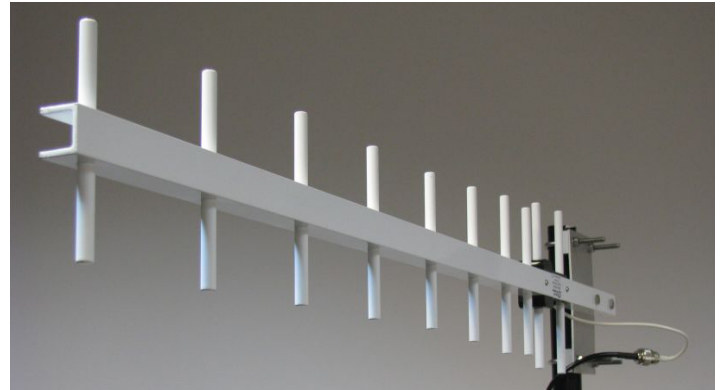
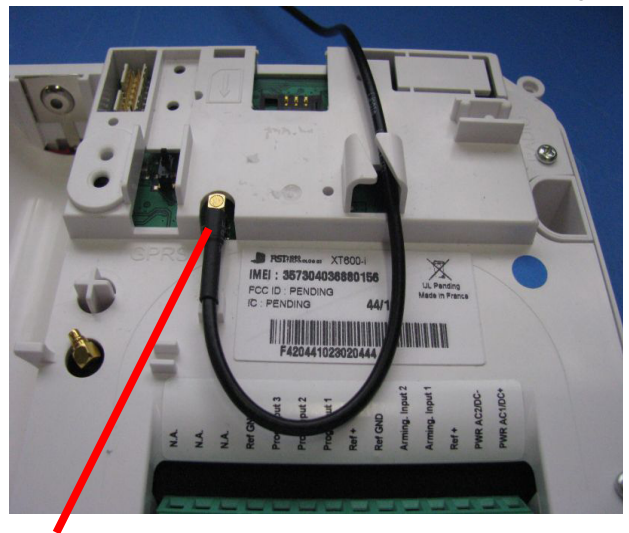


FIG-A

FIG-B



Right - angle MMCX plug location, this plug must not get loose or you will loose reception. You will run the Coax through the cable management provided on the panel in order to properly route the coax so it does not get pinched.



Remove the tab on the cover for the panel in order to allow the coax through without being pinched.



When connecting the pigtail to the MMCX jack on the Control Panel you will feel it 'click' into place.

No Gap = Okay



FULL ASSEMBLY INSTRUCTIONS

1. Remove the control panel's top cover by removing the two screws on the side. **DO NOT INSTALL THE BATTERIES**
2. Remove the existing GPRS antenna by using a needle nose pliers and lifting it straight up, FIG A.
3. Replace the antenna with the 19" pigtail connector. Be sure that you feel it 'Click' into the connector.
4. Run the coax back around through the built in cable management, FIG B.
5. Visually inspect the coax cable and MMCX connector making sure that they are not damaged and still plugged in throughout the process.
6. Remove one tab from the cover to allow the coax to route through so that it is not pinched when the cover is placed onto the panel.
7. Carefully close the middle cover and screw it back together.

Parts List:

- CA-NMNMT010 - 10' 240 Series N-Male to N-Male Coax -
- HG912Y-NF - 14dbi Directional Yagi Antenna -
- CA-MMNFBCN19 - 19" N-Female to MMCX Mini Coax -